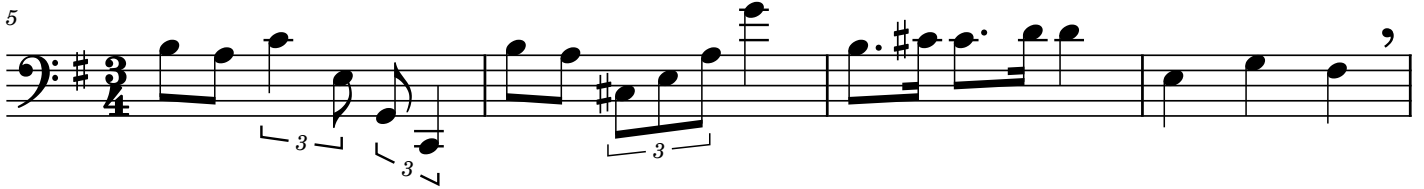


Brahms Intercello

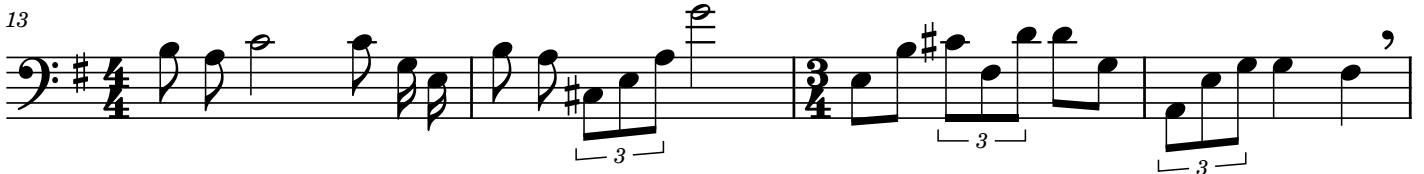
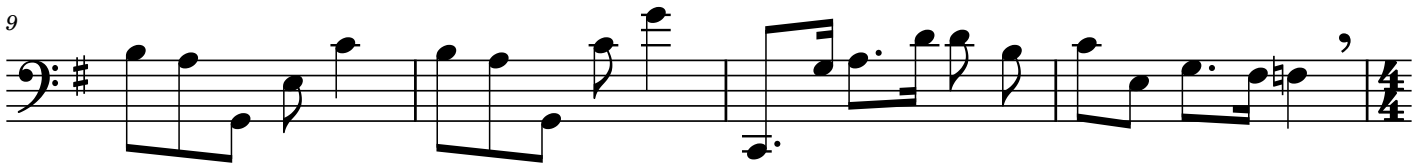
Intermezzo op. 118 no. 2 for self-accompanied cello

Recomposed for
self-accompanied cello
Fred Hsu

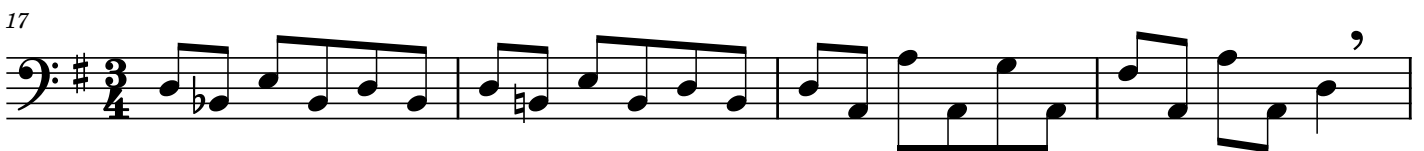
A1 ♩ = 60



A1'



A2



B1

50

Measures 50-52: Bass clef, key signature of one flat. Measure 50: 5/4 time signature, notes G2, A2, B2, C3, D3, E3, F3, G3. Measure 51: 3/4 time signature, notes G3, A3, B3, C4, D4, E4, F4, G4. Measure 52: 5/4 time signature, notes G4, A4, B4, C5, D5, E5, F5, G5.

53

Measures 53-55: Bass clef, key signature of one flat. Measure 53: 4/4 time signature, notes G2, A2, B2, C3, D3, E3, F3, G3. Measure 54: 3/4 time signature, notes G3, A3, B3, C4, D4, E4, F4, G4. Measure 55: 5/4 time signature, notes G4, A4, B4, C5, D5, E5, F5, G5, followed by a fermata over the final note.

mf

B1 2nd

56

Measures 56-59: Bass clef, key signature of one flat. Measure 56: 6/4 time signature, notes G2, A2, B2, C3, D3, E3, F3, G3. Measure 57: 5/4 time signature, notes G3, A3, B3, C4, D4, E4, F4, G4. Measure 58: 5/4 time signature, notes G4, A4, B4, C5, D5, E5, F5, G5. Measure 59: 7/4 time signature, notes G5, A5, B5, C6, D6, E6, F6, G6.

60

Measures 60-63: Bass clef, key signature of one flat. Measure 60: 7/4 time signature, notes G2, A2, B2, C3, D3, E3, F3, G3. Measure 61: 5/4 time signature, notes G3, A3, B3, C4, D4, E4, F4, G4. Measure 62: 5/4 time signature, notes G4, A4, B4, C5, D5, E5, F5, G5. Measure 63: 4/4 time signature, notes G5, A5, B5, C6, D6, E6, F6, G6. Triplet markings are present under measures 61 and 62.

B2

64

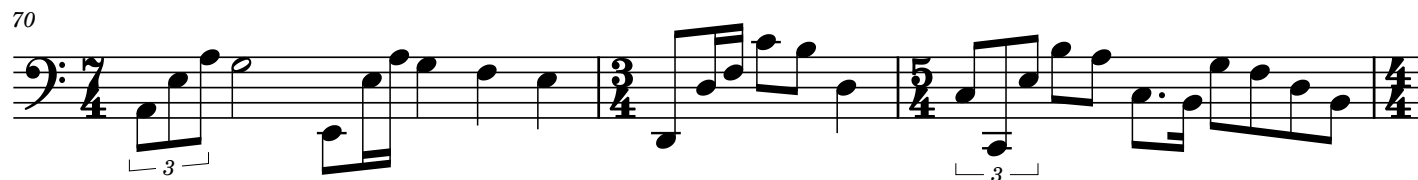
Measures 64-66: Bass clef, key signature of one flat. Measure 64: 4/4 time signature, notes G2, A2, B2, C3, D3, E3, F3, G3. Measure 65: 4/4 time signature, notes G3, A3, B3, C4, D4, E4, F4, G4. Measure 66: 5/4 time signature, notes G4, A4, B4, C5, D5, E5, F5, G5. Triplet markings are present under the final notes of measure 66.

67

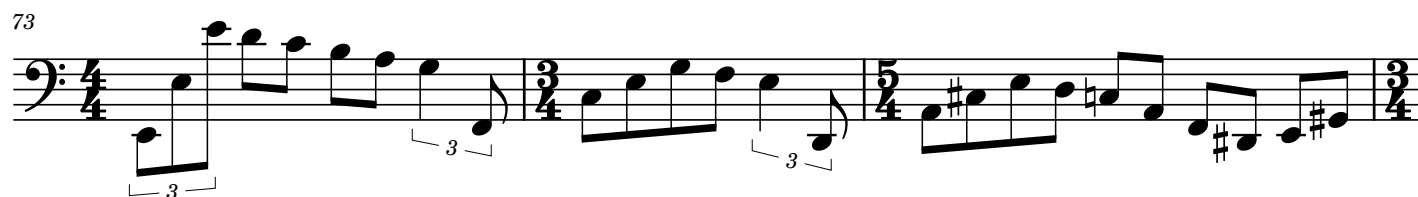
Measures 67-69: Bass clef, key signature of one flat. Measure 67: 5/4 time signature, notes G2, A2, B2, C3, D3, E3, F3, G3. Measure 68: 4/4 time signature, notes G3, A3, B3, C4, D4, E4, F4, G4. Measure 69: 7/4 time signature, notes G4, A4, B4, C5, D5, E5, F5, G5, followed by a fermata over the final note.

B1' expanded

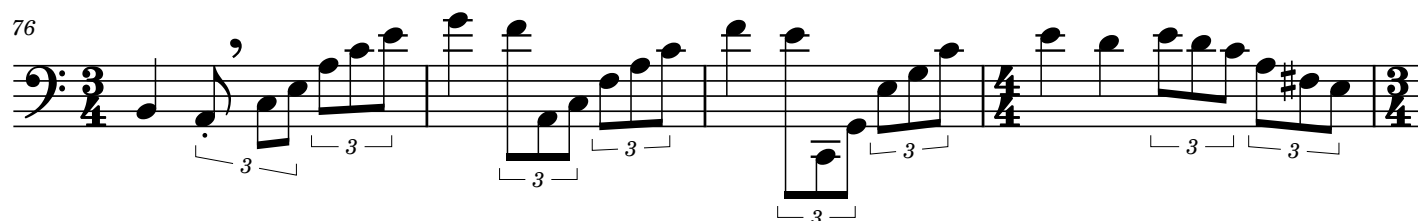
70



73



76

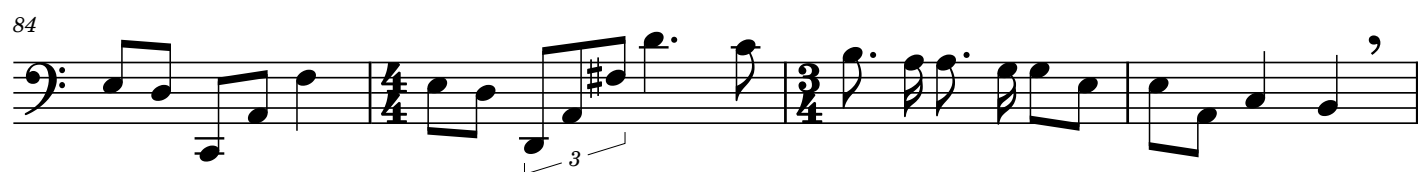


C1 (A1 expanded)

80



84



C2 (A2)

88



92

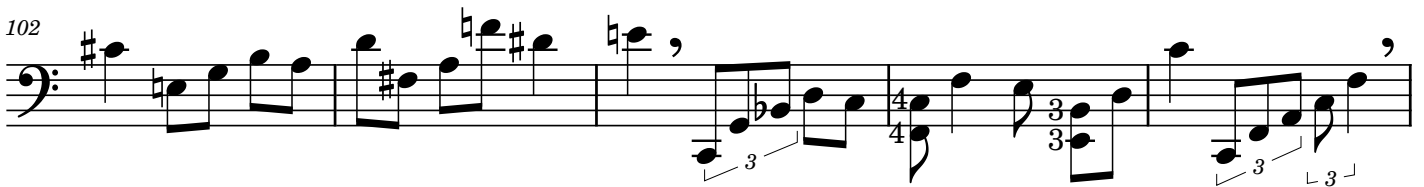


C3 (A3)

97

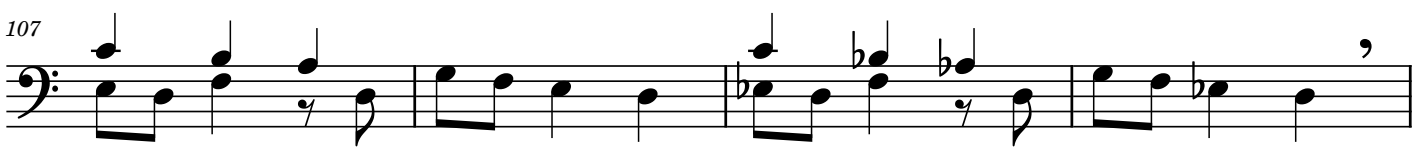


102



C4 (A4)

107



111



C2' (A2')

114

Measures 114-116: Bass clef, 4/4 time signature. Measure 114 starts with a half note G2 and a half note F2. Measure 115 has a half note E2 and a half note D2. Measure 116 has a half note C2 and a half note B1. A fermata is placed over the C2 note. A 'V' symbol is above the final note.

117

Measures 117-120: Bass clef, 3/4 time signature. Measure 117 has a half note G2 and a quarter note F2. Measure 118 has a half note E2 and a quarter note D2. Measure 119 has a half note C2 and a quarter note B1. Measure 120 has a half note A1 and a quarter note G1. A fermata is placed over the G1 note.

121

Measures 121-124: Bass clef, 3/4 time signature. Measure 121 has a half note G2 and a quarter note F2. Measure 122 has a half note E2 and a quarter note D2. Measure 123 has a half note C2 and a quarter note B1. Measure 124 has a half note A1 and a quarter note G1. A fermata is placed over the G1 note.